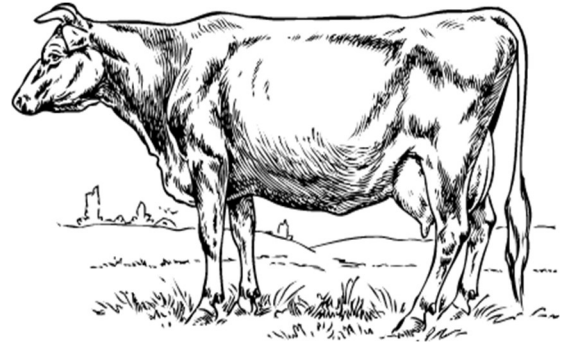


## Rules for Cattle

1. Refer to all other animal rules preceding this section for general animal guidelines.
2. **Membership is required for anyone** over 18 years of age or if **entering in Open Beef**
3. All cattle must have an ear tag and the ear tag numbers must be given to the Murillo Fair Office.
4. Loading and unloading will be from the south entrance located near the barn. Parking will be designated at the north end of the parking area (truck and trailer).



If a special entry form is required it must be accompanied by a regular entry form. All entries are done online at [http://www.xaweb.ca/xaroot/xawebentry.php?p\\_org=oas](http://www.xaweb.ca/xaroot/xawebentry.php?p_org=oas)

## Class 12A - Open Beef

**PRIZES:**            **1<sup>st</sup> - \$10.00**    **2<sup>nd</sup> - \$8.00**    **3<sup>rd</sup> - \$5.00**

1. Female born this year
2. Female born April 1 to December 31, in previous year (yearling)
3. Female born January 1 to March 31, in previous year (yearling)
4. Female, 2 years old, calf at foot.
5. Female, 3 years old, calf at foot.
6. Champion and Reserve Champion female (Ribbons only)
7. Bull born this year
8. Bull born in previous year
9. Bull, 2 years or greater
10. Steer under 1 year
11. Showmanship 10 and under
12. Showmanship 11-14
13. Showmanship 15-18
14. Showmanship 19-25
15. Showmanship 26-40
16. Showmanship 41+
17. Champion and Reserve Champion showman (Ribbons only)